

# ARBARIYA STEELS

(AN ISO 9001:2000 CERTIFIED COMPANY)



*Committed to the :*

*\* Quality \* Economy \* Reliability*



RINA

www.rina.org

CISQ is a member of

IO Net

The International Commission for  
www.io-net-certification.com

IO Net, the association of the world's first class certification bodies, is the largest provider of management system Certification in the world. IO Net is composed of more than 30 bodies and counts over 100 authorities all over the globe.

For information concerning validity of the certificate, you can visit the site [www.rina.org](http://www.rina.org)

**CERTIFICATE No. 16095/07/S**

IT IS HEREBY CERTIFIED THAT THE QUALITY MANAGEMENT SYSTEM OF

**ARBARIYA STEELS**

15.6 KM ON AGRA MATHURA ROAD, ARTONI, AGRA- 282 007, INDIA

IN THE FOLLOWING OPERATIONAL UNITS

15.6 KM ON AGRA MATHURA ROAD, ARTONI, AGRA- 282 007, INDIA

IS IN COMPLIANCE WITH THE STANDARD

**ISO 9001:2000**

FOR THE FOLLOWING FIELD(S) OF ACTIVITIES

EA-17

**MANUFACTURE AND SALE OF CASTINGS, SCAFFOLDINGS AND FORMWORK ACCESSORIES**

Reference is to be made to the Quality Manual for details regarding the exemptions from the requirements of the standard

The validity of this certificate is dependent on an annual / six monthly audit and on a complete review, every three years, of the management system

The use and validity of this certificate are subject to compliance with the RINA document - Rules for the certification of Quality Management Systems

First Issue 03.04.2007

Current Issue 03.04.2007

Dott. Ing. Domenico Andreis  
(Director of Certification and Industrial Services)

RINA SpA  
Via Corsica 12 - 16128 Genova Italy

CISQ is the Italian Federation of management system Certification Bodies

**SINCERT**  
Società per Azioni

80050 VIGEVANO - VIA S. PIETRO  
10120 VIGEVANO - VIA S. PIETRO  
10120 VIGEVANO - VIA S. PIETRO

Agency of SA and SP Mutual  
Recognition Agreements

*Kiramaiahishwan*

FEDERAZIONE  
**CISQ**  
www.cisq.com

Form C0000008-1005

# CASTINGS

## GREY IRON



Microscopic view

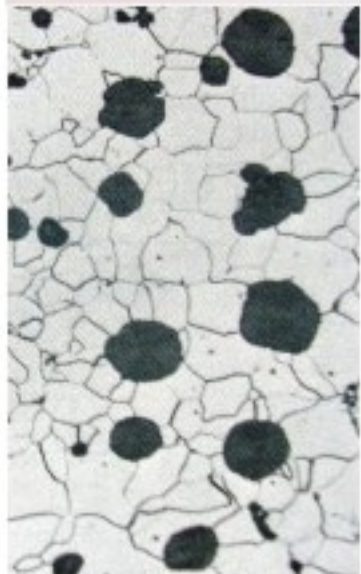


Microscopic view

Tensile strength of Grey Cast Iron		
Grade		Tensile strength in separately cast sample
Symbol	Number	Rm N.mm 2 min
EN-GJL-100	EN-JL-1010	100
EN-GJL-150	EN-JL-1020	150
EN-GJL-200	EN-JL-1030	200
EN-GJL-250	EN-JL-1040	250
EN-GJL-300	EN-JL-1050	300
EN-GJL-350	EN-JL-1060	350

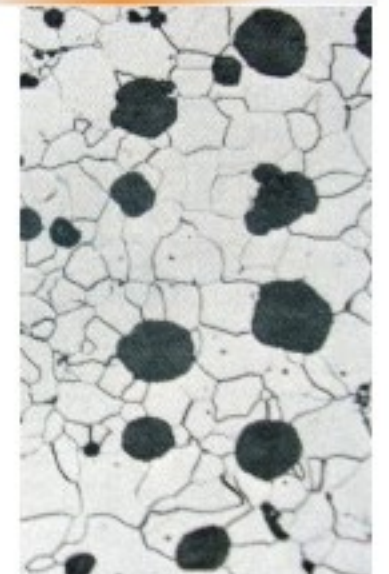
# CASTINGS

## DUCTILE IRON



Microscopic view

Mechanical properties measured on test pieces machined from separately cast samples				
Grade		Tensile Strength	0.2% proof stress	Elongation
Symbol	Number	HM (RM) N.mm <sup>2</sup> min	Rp0.2 N.mm <sup>2</sup> min	A% min
EN-GJS-400-18	EN-JS-1020	400	250	18
EN-GJS-400-15	EN-JS-1030	400	250	15
EN-GJS-450-10	EN-JS-1040	450	310	10
EN-GJS-500-7	EN-JS-1050	500	320	7
EN-GJS-600-3	EN-JS-1060	600	370	3
EN-GJS-700-2	EN-JS-1070	700	420	2
EN-GJS-800-2	EN-JS-1080	800	480	2
EN-GJS-900-2	EN-JS-1090	900	600	2



Microscopic view

# CASTINGS

## MALLEABLE IRON



Microscopic view

Grade		Tensile Strength N.mm <sup>2</sup>	0.2% proof stress Rp0.2 N.mm <sup>2</sup>	Elongation %
Blackheart Malleable	EN-GJMB-300-6	300	–	6
	EN-GJMB-350-10	350	200	10
Pearlitic Malleable	EN-GJMB-450-6	450	270	6
	EN-GJMB-500-5	500	300	5
	EN-GJMB-550-4	550	340	4
	EN-GJMB-600-3	600	390	3
Whiteheart Malleable	EN-GJMB-400-5	400	220	5



Microscopic view

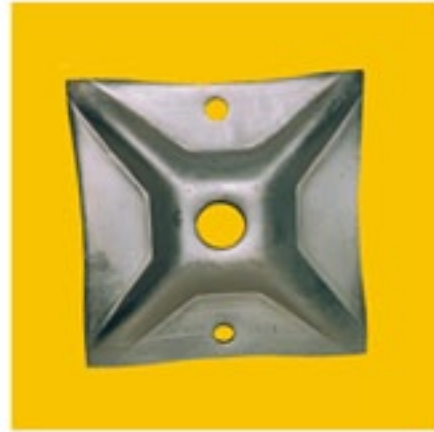
# CASTINGS

## FORGED COMPONENTS



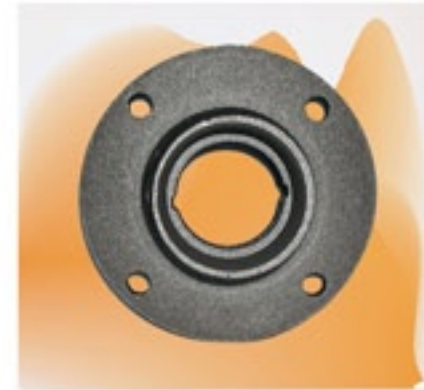
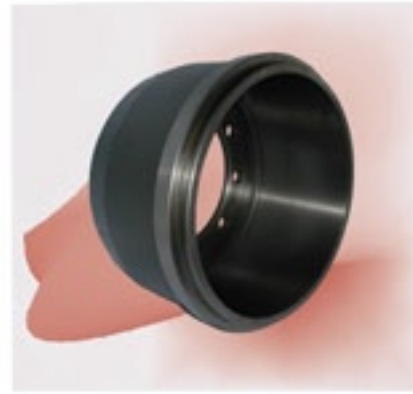
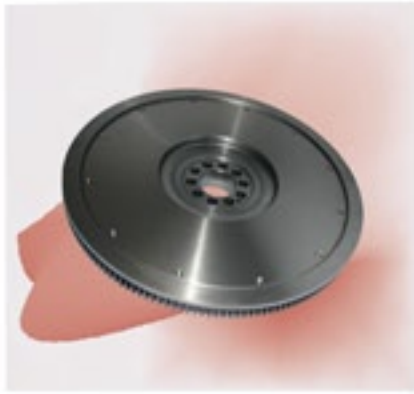
# CASTINGS

## SHEET METAL & FABRICATED COMPONENTS



# CASTINGS

## MACHINED COMPONENTS





# EQUIPMENTS



Arbariya

Steels



E-mail : [arbariya@sancharnet.in](mailto:arbariya@sancharnet.in)

Website : [www.arbariya.in](http://www.arbariya.in)

malleable iron ductile iron  
grey iron



An ISO 9001:2000 CERTIFIED COMPANY

[www.arbariya.in](http://www.arbariya.in)